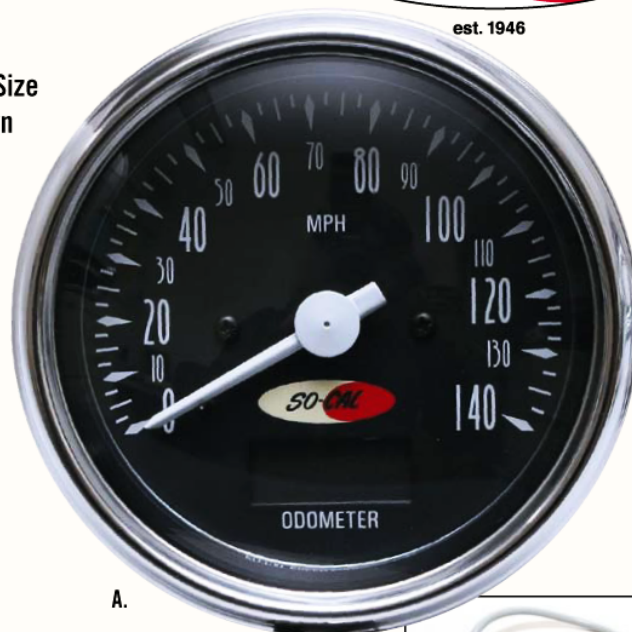




SO-CAL Speed Shop 10,000 RPM Electric Tach:
#001-62655 10,000 RPM tachometer \$99.95 ea.

Actual Size
Shown



A.

New



B.

SO-CAL Speed Shop 140 MPH Electric Speedometer: This is the newest addition to the SO-CAL Speed Shop line of electric gauges. It reads from 0-140 mph, is easily adjusted and is built with the same integrity you have come to expect from SO-CAL products. (sensor sold separately)
(A) #001-62660 Electric speedometer: \$129.95 ea.
(B) #001-62661 GM/Mopar speedo sensor: \$39.95 ea.



A.

B.

New

SO-CAL Classic Style Gauge Cups: We offer two types of cups designed to mount 2 1/16" or 3 3/8" gauges directly to the steering column.
(A) #001-62666 Gauge cup, 3 3/8" dia.: \$37.50 ea.
(B) #001-62667 Gauge cup, 2 1/16" dia.: \$27.75 ea.

New

SO-CAL 0-60 psi Tire Gauge: Check out this 0-60 psi flexible tire gauge. It features an easy to read 2" dia. gauge face, 12" long neoprene hose and comes in a handy storage case.
#001-62662 Flexible tire gauge: \$19.95 ea.

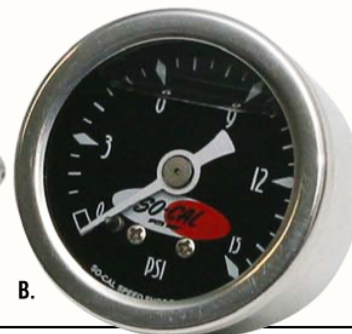


New

SO-CAL Speed Shop Direct Mount Gauges: We offer two types of direct mounts gauges; (A) water temperature 0-250 degrees and (B) fuel pressure 0-15 psi, 1 1/2" dia. The fuel gauge is 1/8" npt male direct mount and the temp gauge is 3/8" npt male direct mount. Both are anti-vibration liquid filled.
(A) #001-62658 Water temp: \$52.99 ea.
(B) #001-62657 Fuel pressure: \$35.00 ea.



A.



B.