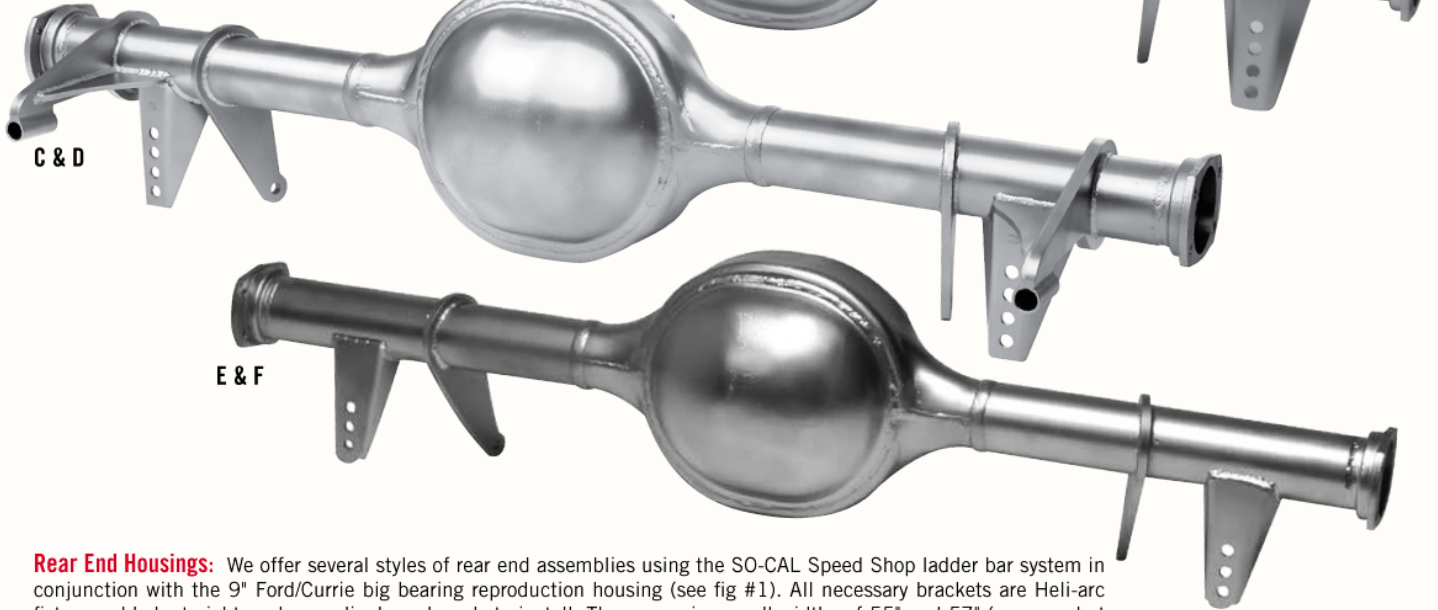


est. 1946

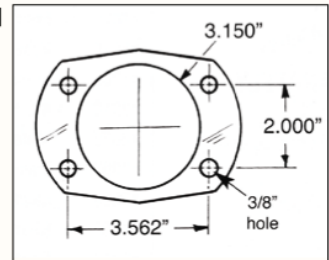
A & B



Rear End Housings: We offer several styles of rear end assemblies using the SO-CAL Speed Shop ladder bar system in conjunction with the 9" Ford/Currie big bearing reproduction housing (see fig #1). All necessary brackets are Heli-arc fixture welded, straightened accordingly and ready to install. They come in overall widths of 55" and 57" (measured at the wheel mounting surface).

- (A) #001-70914-55 Housing, 'A' spring top mounted, 55" wide: \$699.00 ea.
- (B) #001-70914-57 Housing, 'A' spring top mounted, 57" wide: \$699.00 ea.
- (C) #001-70912-55 Housing, 'A/' '40 style buggy spring back mounted, 55" wide: \$699.00 ea.
- (D) #001-70912-57 Housing, 'A/' '40 style buggy spring back mounted, 57" wide: \$699.00 ea.
- (E) #001-70913-55 Housing, coil-over shocks back mounted, 55" wide: \$699.00 ea.
- (F) #001-70913-57 Housing, coil-over shocks back mounted, 57" wide: \$699.00 ea.

Fig #1



Winters V8 Quick Change Rear End: This hot rod V8 Quick Change rear end features a 8 3/8" 3.78 ring and pinion, a heat-treated lower shaft, Wedglock gear driven positive traction differential, axle seals, standard or finned back cover and the 6-spline back gear set of your choice. It uses 31-spline big bearing axles and accommodates aftermarket disc or stock Ford drum brakes. We offer it in two widths, 55" and 57" overall (measured at the wheel mounting surface).

- #167-SR2550SP55 Winters V8 Q/C, 55" wide, w/standard back cover, pol.: \$3,559.95 ea.
- #167-SR2550SP57 Winters V8 Q/C, 57" wide, w/standard back cover, pol.: \$3,559.95 ea.
- #167-SR2550SU55 Winters V8 Q/C, 55" wide, w/standard back cover, unpol.: \$2,450.00 ea.
- #167-SR2550SU57 Winters V8 Q/C, 57" wide, w/standard back cover, unpol.: \$2,450.00 ea.
- #167-SR2550FP55 Winters V8 Q/C, 55" wide, w/finned back cover, pol.: \$3,559.95 ea.
- #167-SR2550FP57 Winters V8 Q/C, 57" wide, w/finned back cover, pol.: \$3,559.95 ea.
- #167-SR2550FU55 Winters V8 Q/C, 55" wide, w/finned back cover, unpol.: \$2,450.00 ea.
- #167-SR2550FU57 Winters V8 Q/C, 57" wide, w/finned back cover, unpol.: \$2,450.00 ea.