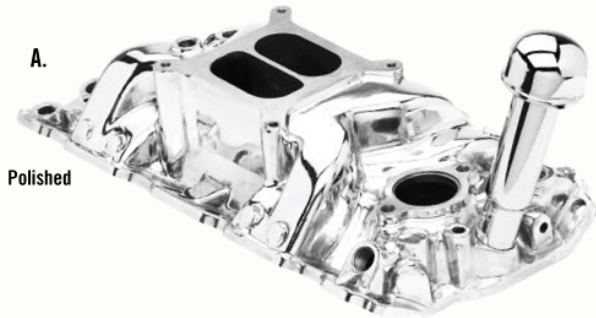




est. 1946

Engine Accessories



Polished



A.



B.

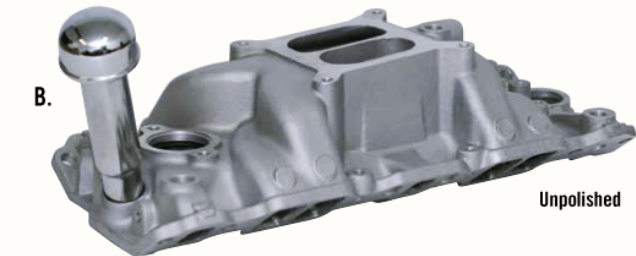
New



C.

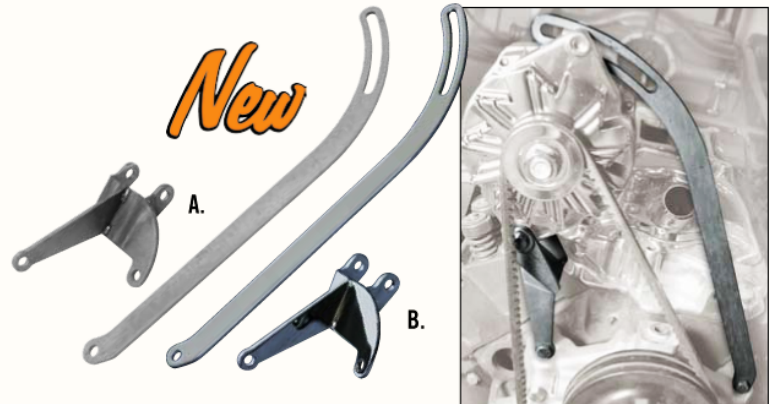
New

SO-CAL SB Chevy Water Neck and Direct Mount Temp Gauge: This polished aluminum SB Chevy water neck (A) is a natural fit for our direct mount water temperature gauge (B). The gauge features 0-250° read-out, 1 3/8" S/S case, 3/8" npt male connector and is anti-vibration liquid filled.
 (A) #184-9468 Water Neck: \$20.00 ea. (gauge not included)
 (B) #001-62658 Water Temp Gauge: \$52.99 ea.
 (C) #001-62649 Chrome adapter, 1/2" to 3/8" npt.: \$5.95 ea.



B.

Unpolished



New

A.

B.

Intake Manifold With Oil Fill Tube: For a traditional look with no oil filler or breathers on your valve covers, try SO-CAL's exclusive intake manifold complete with front-mounted oil filler tube which you can cut down to suit your needs. Available polished or unpolished for small-block Chevys (1957-'95). It's a high-performance dual-plane 180-degree street manifold designed to be used with Holley, Carter AFB, or Edelbrock square-bore carbs.
 (A) #001-62301 SB Chevy polished: \$279.99 ea.
 (B) #001-62302 SB Chevy unpolished: \$209.99 ea.

Alternator Bracket: This effective, single use bracket mounts a standard GM alternator to the passenger side of a small block Chevy. The bracket is now being offered in either plain or show-chrome finish.
 (A) #001-60300 Alternator bracket, plain: \$49.95 ea.
 (B) #001-60300C Alternator bracket, chrome: \$79.95 ea.



Ansen-Style Dual Carb Intake:

Cast after the old Ansen style intake manifold, this little puppy can instantly hop up your single carb intake. Fits all 3 bolt early Ford carbs.
 #300-6175: \$175.00 ea.

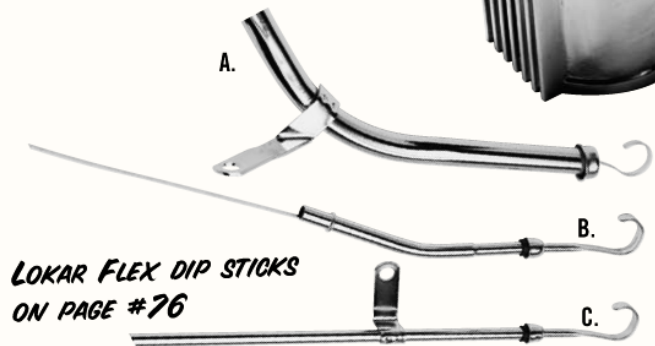
Finned Oil Filter Cover: Cast from aluminum and highly polished, this slip-on oil filter cover is designed to match our other cast aluminum accessories. I.D. 3 11/16"
 #172-925-17480 Finned oil filter cover \$25.99 ea.



A. & B.

C, D & E.

Chrome Pulleys: SO-CAL carries a wide range of chrome steel pulleys for short water pumps with single, double or triple grooves. Call for long pump applications.
 (A) #140-8950 Top, single groove: \$24.95 ea.
 (B) #140-8952 Top, double groove: \$28.95 ea.
 (C) #140-8951 Bottom, single groove: \$24.95 ea.
 (D) #140-8953 Bottom, double groove: \$26.95 ea.
 (E) #140-8963 Bottom, triple groove: \$39.95 ea.



LOKAR FLEX DIP STICKS ON PAGE #76

Chrome Dipsticks: SO-CAL carries a wide range of chrome steel engine and trans dipsticks that are stock replacement but have been cleverly re-engineered with adjustable mounting tabs making them ideal for custom applications.
 (A) #213-7401 S/B Chevy 350/400 trans dipstick: \$9.95 ea.
 (B) #213-7171 S/B Chevy engine dipstick: \$4.95 ea.
 (C) #213-7174 S/B Ford engine dipstick: \$9.95 ea.