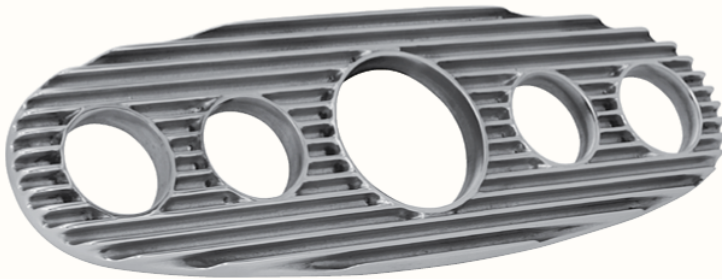


Dashes, Instruments, Etc.

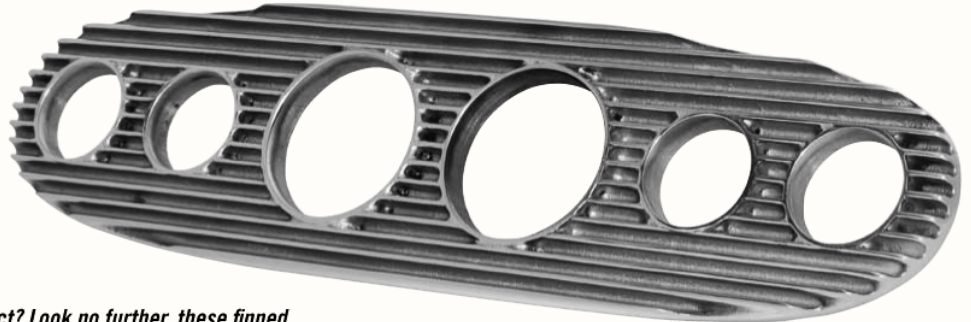


est. 1946



#300-6101 5-Hole instrument panel, polished: \$115.00 ea.

FINNED INSTRUMENT PANELS

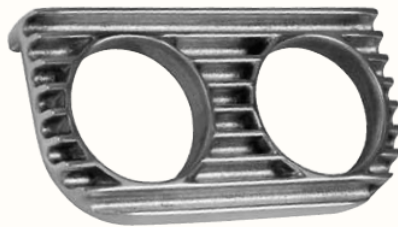


#300-6102 6-Hole instrument panel, polished: \$135.00 ea.

Looking to add some style to your next project? Look no further, these finned cast aluminum instrument panels will definitely add a custom look to any hot rod, vintage truck or Bonneville racer. Built for 3 3/8" and 2 1/8" gauges.

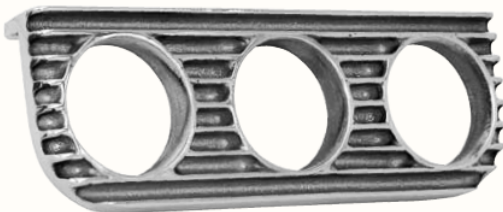


#300-6122 1-Instrument panel, polished: \$30.00 ea.

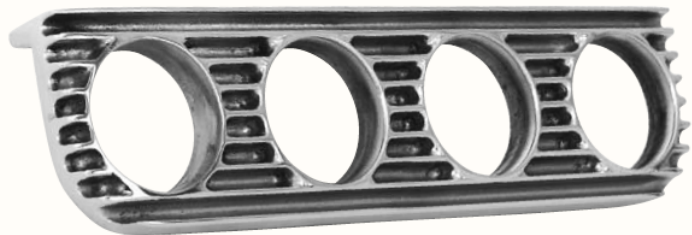


#300-6120 2-Instrument panel, polished: \$35.00 ea.

BELOW DASHBOARD INSTRUMENT PANELS



#300-6124 3-Instrument panel, polished: \$40.00 ea.



#300-6126 4-Instrument panel, polished: \$45.00 ea.



Cast Bar: Cast bar flattens the curve at the bottom of 1929-1932 dash, long enough for 4-Instrument panel, marked to cut for others.

#300-6128 Cast bar: \$15.00 ea.

